

## SMART COMMUNITY HEALTH MONITORING AND EARLY WARNING SYSTEM FOR WATER-BORNE DISEASES

Dr. Deepali Y. Kirange<sup>1</sup>, Dr. Yogesh N. Chaudhari<sup>2</sup>

<sup>1,2</sup> Assistant Professor, KCES's IMR, Jalgaon.

Email: [deepali.kirange@imr.ac.in](mailto:deepali.kirange@imr.ac.in)<sup>1</sup>, [yogeshchaudhari@imr.ac.in](mailto:yogeshchaudhari@imr.ac.in)<sup>2</sup>

### Abstract

Water-borne diseases remain a major public health concern, particularly in developing countries where access to safe drinking water and sanitation is limited. Diseases such as cholera, typhoid, dysentery, and hepatitis spread rapidly through contaminated water sources. Traditional monitoring systems often detect outbreaks only after widespread infection has occurred. With the advancement of technologies such as Internet of Things (IoT), Artificial Intelligence (AI), machine learning, and wireless sensor networks, smart monitoring systems can provide real-time water quality assessment and early disease detection. This review paper analyzes recent research on smart community health monitoring systems and early warning mechanisms designed to prevent water-borne disease outbreaks. The study summarizes existing techniques including IoT-based water quality monitoring, community health surveillance, machine learning prediction models, and integrated early warning systems. A comparative analysis of existing approaches is presented to highlight their advantages and limitations. The review also identifies research gaps and future directions for developing efficient, scalable, and cost-effective disease monitoring solutions.

**Keywords:** Water-borne diseases, Internet of Things, Smart health monitoring, Early warning systems, Machine learning, Water quality monitoring.

► Corresponding Author: Dr. Deepali Y. Kirange

### 1. Introduction

Water is an essential resource for human survival, but contamination of water sources leads to the spread of several infectious diseases. According to global health studies, millions of people suffer annually from water-related diseases due to poor sanitation and unsafe drinking water. Monitoring water quality and detecting disease outbreaks early is therefore critical for public health management.

Traditional water monitoring methods rely on laboratory testing and manual data collection, which are often slow, expensive, and incapable of providing real-time information. Recent technological advancements have enabled the development of smart monitoring systems that utilize sensors, wireless communication, and cloud-based analytics to track water quality and community health indicators.

The Internet of Things (IoT) allows sensors to continuously measure parameters such as pH, turbidity, temperature, and chemical contamination levels. These data are transmitted to cloud platforms where analytics and machine learning algorithms analyze patterns to identify potential health risks. Such systems can automatically send alerts to authorities when abnormal conditions are detected. [2]

Furthermore, smart community health monitoring integrates environmental monitoring with public health data collected from hospitals, health workers, or community reports. This integration enables predictive models capable of identifying early signs of outbreaks before they escalate. This paper presents a comprehensive review of existing smart monitoring technologies used to detect and prevent water-borne diseases.

## **2. Background Study**

### **2.1 Water-Borne Diseases and Their Impact**

Water-borne diseases are illnesses caused by pathogenic microorganisms that are transmitted through contaminated water. These diseases are prevalent in regions with poor sanitation and inadequate water treatment infrastructure.

Common water-borne diseases include:

- Cholera
- Typhoid fever
- Dysentery
- Hepatitis A and E
- Diarrhea

Contaminated drinking water, inadequate sewage systems, and environmental pollution are major factors contributing to these diseases. Early detection systems are therefore necessary to prevent outbreaks and reduce mortality.

### **2.2. Smart Technologies for Health Monitoring**

#### **2.2.1 Internet of Things (IoT)**

The Internet of Things refers to interconnected devices capable of collecting and transmitting data through the internet. IoT sensors are widely used for monitoring environmental parameters such as water quality.

IoT-based water monitoring systems typically measure parameters including:

- pH level
- Turbidity
- Temperature
- Dissolved oxygen
- Electrical conductivity

The collected data is transmitted to cloud servers for analysis and visualization. These systems provide real-time monitoring and remote access to water quality information. [1]

IoT technology also enables automated alerts when water quality parameters exceed predefined safety limits.

#### **2.2.2 Wireless Sensor Networks**

Wireless sensor networks (WSN) consist of multiple sensor nodes that communicate wirelessly to collect environmental data. WSNs are widely used in water monitoring systems to gather real-time data from distributed locations.

Compared to traditional monitoring methods, WSN-based systems provide faster data collection and improved monitoring coverage.

#### **2.2.3 Artificial Intelligence and Machine Learning**

Artificial intelligence techniques help analyze large volumes of environmental and health data. Machine learning algorithms can detect patterns and predict disease outbreaks based on historical and real-time data.

Predictive models analyze multiple factors such as:

- Water contamination levels
- Weather conditions
- Population health reports
- Environmental indicators

These models allow health authorities to identify potential outbreaks earlier and take preventive actions.

### **2.3. IoT-Based Water Quality Monitoring Systems**

IoT-based water quality monitoring systems are designed to continuously monitor water sources such as rivers, reservoirs, and wells.

These systems use sensors connected to microcontrollers to collect water parameters and transmit them to cloud platforms through wireless communication technologies such as Wi-Fi, LoRaWAN, or GSM networks.

Research studies have shown that IoT-based monitoring can significantly improve water quality management by enabling real-time data collection and automated alerts.[3]

The architecture of a typical IoT water monitoring system includes:

1. Sensor layer
2. Data transmission layer
3. Cloud processing layer
4. Application layer

Such systems enable authorities to track water contamination and take immediate action to prevent disease outbreaks.

### **2.4. Smart Community Health Monitoring Systems**

Smart community health monitoring systems collect health-related data directly from communities. These systems rely on mobile applications, wearable devices, and health worker reports to track symptoms associated with water-borne diseases.

Community-based surveillance systems collect information such as:

- Fever cases
- Diarrhea symptoms
- Vomiting incidents
- Hospital admissions

These data are analyzed using statistical algorithms to detect abnormal increases in disease cases. A recent study proposed a community-driven monitoring system where health workers report symptoms through mobile interfaces. The system analyzes these reports and triggers early warnings when unusual disease patterns are detected. [7]

Such approaches are particularly useful in rural areas where IoT infrastructure may be limited.

## **3. Literature Review**

Recent advancements in smart monitoring systems have focused on the use of Internet of Things (IoT), wireless sensor networks, and intelligent data analytics for monitoring water quality and predicting water-borne diseases. **Geetha and Gouthami (2017)** proposed an IoT-enabled real-time water quality monitoring system that uses sensors to continuously measure water parameters and transmit data for analysis. Similarly, **Sanya et al. (2022)** developed a smart IoT-based system capable of monitoring multiple water quality parameters, improving the efficiency of water management systems. A comprehensive review by **Jan et al. (2021)** discussed recent techniques and trends in IoT-based water monitoring systems and highlighted the importance of sensor networks and cloud computing for real-time monitoring.

Several studies have proposed intelligent and modular monitoring systems. **Syrmos et al. (2023)** designed a modular IoT-based water monitoring system that allows flexible integration of multiple sensors for environmental monitoring. **Singh and Walingo (2024)** introduced a wireless sensor network-based smart monitoring system that improves the accuracy and reliability of water quality measurements. In addition, **Irawan et al. (2024)** developed a household-level IoT-based water monitoring prototype that enables users to monitor water conditions in real time.

Recent research has also explored the integration of health monitoring and disease prediction. **Nemade et al. (2024)** proposed an automated IoT-based system for predicting water-related diseases using environmental data and machine learning techniques. Similarly, **Gawade et al. (2025)** introduced a smart community health monitoring and early warning system designed for rural areas to detect potential outbreaks of water-borne diseases. **Yang et al. (2020)** highlighted the potential of emerging IoT technologies in smart health research, emphasizing the importance of combining health data with environmental monitoring systems.

Further developments in real-time monitoring frameworks include **Hasib et al. (2026)**, who proposed HydroSense, a multi-parameter IoT-based water quality monitoring framework capable of collecting and analyzing environmental data in real time. **Siddique et al. (2023)** explored IoT-based flood monitoring and early warning systems, demonstrating the role of smart sensors in environmental risk management. Similarly, several studies such as those published in **Heliyon (2024)** and **Discover Applied Sciences (2024)** have focused on real-time monitoring systems in water treatment plants and wireless sensor network platforms for drinking water monitoring.

Other researchers, including **Ali and Sarangamath (2025)**, have proposed smart water quality monitoring systems that integrate sensors with cloud-based platforms for remote monitoring. In addition, research in **Computers in Biology and Medicine (2024)** explored IoT biodynamic models for controlling waterborne diseases through intelligent data analysis and prediction models.

### 3.1 Comparative Analysis of Existing Systems

Based on the literature review, a comparative analysis of the existing systems has been presented in tabular form. The table includes key aspects such as the author, technology used, main features, and limitations of each study. The summarized comparison of these studies is shown in **Table 3.1.1**

#### 3.1.1

Table 3.1.1 Comparative Analysis

Author	Technology	Features	Limitations
Gouthami (2017)	IoT Monitoring	Real-time water quality monitoring	Limited prediction capability
Sanya et al. (2022)	IoT Sensors	Continuous water parameter monitoring	Focus mainly on water quality
Singh et al. (2024)	IoT + WSN	Remote monitoring of water sources	Infrastructure cost
Gawade et al. (2025)	Community Health Monitoring	Symptom-based disease detection	Manual reporting required
Recent AI-based systems (2026)	AI + IoT + Health Data	Predict outbreaks and send alerts	Data privacy concerns
E. H. Irawan et al. (2024)	IoT-based Water Monitoring	Real-time monitoring of household water parameters using IoT sensors.	Limited to small-scale monitoring; no disease prediction.

A. Hasib et al. (2026)	IoT Multi-Parameter Monitoring (HydroSense)	Monitors multiple water quality parameters with cloud-based alerts.	Requires internet connectivity; high deployment cost.
M. Siddique et al. (2023)	IoT-based Flood Monitoring	Provides real-time flood monitoring and early warning alerts.	Focuses on floods, not water quality or diseases.
Heliyon Study (2024)	IoT Monitoring in Treatment Plants	Real-time monitoring of water quality in treatment plants.	Limited to plant-level monitoring; no health data integration.
WSN Platform Study (2024)	Wireless Sensor Network (WSN)	Distributed sensors for large-scale drinking water monitoring.	Maintenance and power management challenges.
I. Ali & P. Sarangamath (2025)	Smart IoT Water Monitoring	Remote monitoring with cloud data storage and alerts.	Focus only on water parameters; limited scalability.
IoT Biodynamic Model Study (2024)	IoT + Biodynamic Modeling	Predicts water-borne disease outbreaks using sensor data.	Requires complex models and large datasets.
<b>Proposed Model</b>	<b>IoT + AI + Community Health Monitoring</b>	<b>Integrates water quality monitoring with community health data, uses machine learning for early outbreak prediction, and provides automated alerts for authorities</b>	<b>Requires reliable data integration and proper data security mechanisms</b>

Despite significant progress in this field, several challenges still remain in the development and implementation of smart monitoring systems. Many existing systems focus mainly on environmental monitoring but lack proper integration with health data, which limits their ability to provide comprehensive disease surveillance. The high cost of sensor deployment also makes large-scale implementation difficult, particularly in rural and developing regions. Furthermore, issues related to data privacy and security, limited internet connectivity in remote areas, and the absence of standardized monitoring frameworks continue to affect the effectiveness of these systems. Therefore, future research should focus on developing low-cost, scalable, and energy-efficient monitoring systems that integrate environmental and health data to improve disease prediction and public health monitoring.

Most existing systems focus either on **water quality monitoring** or **health data** separately. The **proposed model** integrates **environmental monitoring, community health data, and AI-based prediction**, enabling **early detection of water-borne disease outbreaks and faster response from health authorities**.

#### 4. Proposed Methodology

The proposed **Smart Community Health Monitoring and Early Warning System for Water-Borne Diseases** integrates environmental monitoring with community health surveillance to detect potential disease outbreaks at an early stage. The system combines IoT-based sensors, data analytics, and machine learning techniques to monitor water quality and health-related data in real time.

The first step is **data collection**, where IoT sensors gather environmental parameters such as pH level, turbidity, and temperature from water sources. At the same time, health-related information such as symptoms and disease cases is collected from communities through mobile applications, healthcare workers, and hospital reports.

The collected data is then transmitted to cloud platforms for **data analysis**. Advanced analytics techniques process and organize the data to identify abnormal patterns related to water contamination and health conditions.

Next, **prediction models** based on machine learning algorithms analyze historical and real-time data to detect anomalies and estimate the risk of disease outbreaks. If unusual patterns are detected, the system generates **automated alerts** that are sent to health authorities through SMS, email, or mobile applications.

Finally, the system provides **decision support** through dashboards that help authorities monitor conditions and take preventive actions. Some advanced systems may also integrate **wastewater monitoring and environmental signals** to improve early detection of water-borne disease outbreaks.

The proposed model is shown in figure 4.1.

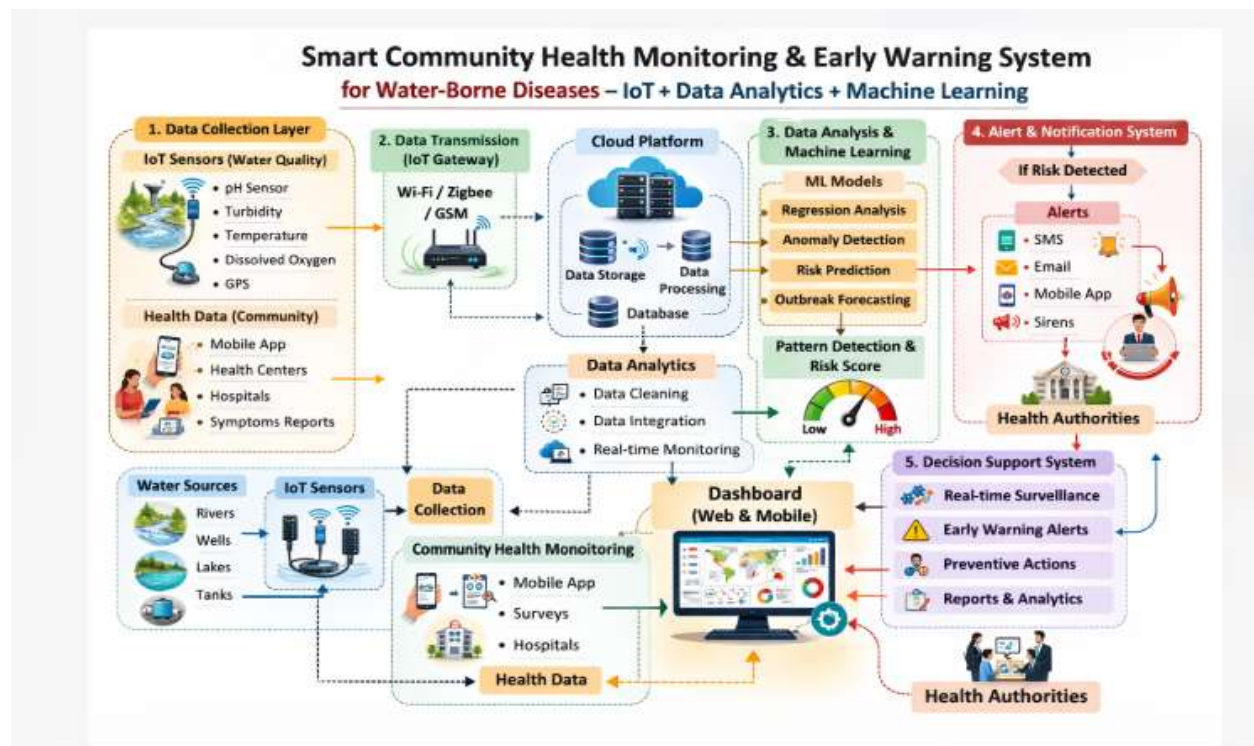


Figure 4.1 Proposed Model

## 5. Conclusion

Water-borne diseases remain a major global public health challenge, particularly in regions with inadequate sanitation and water treatment facilities. Smart community health monitoring systems provide promising solutions for the early detection and prevention of such outbreaks. This review examined existing technologies including IoT-based water quality monitoring, wireless sensor networks, machine learning prediction models, and community-based surveillance systems. The comparative analysis indicates that integrated systems combining environmental monitoring with health data analysis are more effective for early warning and disease prevention. Future research should focus on integrating advanced technologies such as the Internet of Things (IoT), Artificial Intelligence (AI), and big data analytics to improve disease monitoring and management. In addition, the development of low-cost sensors, cloud-based health surveillance platforms, and mobile health applications can support real-time data collection, community reporting, and faster decision-making. Emphasis should also be placed on creating cost-effective, scalable, and efficient monitoring systems that can operate effectively in resource-constrained and rural environments.

## 6. References

1. Geetha, S., & Gouthami, S. (2017). Internet of Things enabled real-time water quality monitoring system. *Smart Water*, 2(1).
2. Sanya, W. M., Alawi, M. A., & Eugenio, I. (2022). Design and development of smart water quality monitoring system using IoT. *International Journal of Advances in Scientific Research and Engineering*.
3. Jan, F., Min-Allah, N., & Dustegor, D. (2021). IoT based smart water quality monitoring: Recent techniques, trends and challenges. *Water*.
4. Syrmos, E., et al. (2023). An intelligent modular water monitoring IoT system. *Sustainability*.
5. Singh, Y., & Walingo, T. (2024). Smart water quality monitoring with IoT wireless sensor networks. *Sensors*.
6. Nemade, B., et al. (2024). IoT-based automated system for water-related disease prediction. *Scientific Reports*.
7. Gawade, P. D., et al. (2025). Smart community health monitoring and early warning system for water-borne diseases in rural areas.
8. Yang, X., et al. (2020). Exploring emerging IoT technologies in smart health research. *BMC Medical Informatics and Decision Making*.
9. Irawan, E. H., Nurchim, N., & Wijiyanto, W. (2024). Prototype of household water quality monitoring system using Internet of Things. *Jurnal Inotera*.
10. Hasib, A., et al. (2026). HydroSense: Real-time multi-parameter water quality monitoring framework using IoT.
11. Siddique, M., Ahmed, T., & Husain, M. S. (2023). Flood monitoring and early warning systems – An IoT based perspective. *EAI Endorsed Transactions on Internet of Things*.
12. IoT based real-time water quality monitoring system in water treatment plants. (2024). *Heliyon*.
13. Wireless sensor network platform for drinking water monitoring. (2024). *Discover Applied Sciences*.
14. Ali, I., & Sarangamath, P. (2025). Smart water quality monitoring system. *International Journal for Research in Applied Science and Engineering Technology (IJRASET)*.
15. Smart waterborne disease control using IoT biodynamic models. (2024). *Computers in Biology and Medicine*.