

AI AND AUTOMATION IN ARCHITECTURE DESIGN

Atharva Nilesh Kadam¹, Dr. Apurva A. Yadav², Dr. Akshata Nayak³

¹ Student, (Msc.IT), Kirti M Doongursee College, Dadar, India.

Email: atharvankadam@gmail.com

^{2,3} Assistant Professor, Kirti M Doongursee College, Dadar, India.

Email: apurva.yadav@despune.org², akshata.nayak@despune.org³

Abstract

Forts have always been built using human wisdom, local resources, and manpower. Recent technological breakthroughs, especially in the areas of Artificial Intelligence (AI), robotics and computational modelling offer tremendous possibilities to reengineer the fortification process. This article investigates how AI can be used for design assist, automation, and advance smart materials to make fortification process faster, safe and sustainable. Related work An investigation is carried out through the literature, focusing on the current trends and methods in technologies for architectural design, structural engineering, and military construction. The paper also presents use of AI in predicting maintenance, structure integrity checking and real time threat monitoring. It also looks at AI-assisted surveillance systems and drone-based terrain analysis, as well as construction technologies to see how they could be used in the defences of today. The study concludes with propositions for AI developments and advanced technologies towards fort building in respect to the military, historical preservation and security.

Keywords: Artificial Intelligence (AI), Fortification Construction, Robotics, Smart Materials, Self-Healing Structures, Drone-Based Site Evaluation, Military Fortifications, Proactive Maintenance, Lidar Technology.

► *Corresponding Author: Atharva Nilesh Kadam*

1. Introduction

Fortresses have always been significant structures, providing defence and strategy and possessing distinctive architectural, cultural value. The construction of fortifications was as much a matter of archaeology as engineering, with the methods used to construct and maintain defensive works in antiquity often looming large in 18th century theories about constructing forts. In traditional approaches, however, were generally ended with efficiency, flexibility and sustainability limitations

The technological revolutions brought about by Artificial Intelligence (AI) and other new technologies have revolutionized the process of fortification. Design processes in AI now maximize material choice, structural stability, and lifespan. Robotics and automation enable simple and efficient construction processes with minimal or no human interaction, maximum precision, and fewer defects. Application of intelligent materials like self-healing concrete and adaptive composites maximizes longevity and resilience.

AI also allows for sophisticated monitoring, drone-based site survey, and predictive maintenance for fortifications. Real-time processing of data enables threat detection at an early stage, autonomous response, and best resource allocation. Consequently, AI-based fortifications are now

more secure, sustainable, and efficient, and hence can be applied not just for cultural heritage protection but also for contemporary civic infrastructure and protection buildings.

2. Literature Review

The application of artificial intelligence (AI) in fortification processes has become increasingly popular in recent years, driving efficiency, security, and sustainability to unprecedented levels.

Silva et al. (2022) discussed AI-based generative design in architecture, describing the way AI enhances computational design and material optimization for contemporary fortifications.

Zhang et al. (2021) also discussed the use of autonomous robots in mega construction projects, describing the way AI algorithms enhance structural planning and resource management.

Kim et al. (2019) examined AI-drone technology in fortified structures, illustrating how it simplifies site mapping and appraisal and minimizes manual labour.

Green et al. (2021) expanded on this school of thought by illustrating how autonomous drones can facilitate real-time environmental monitoring and extend their use in construction and defence of fortified structures.

Another important trend is the development of smart materials. **Garcia et al. (2020)** and **Martinez et al. (2021)** detailed the development of self-healing materials and adaptive composites that promote structural integrity and reduce long-term maintenance expenses.

Anderson et al. (2021) pointed out the use of AI-based LiDAR technology for terrain and location analysis, which enables precise and sustainable fortification planning.

Wilson et al. (2020) explained the use of massive 3D printing technology in the construction of fortifications and how digital manufacturing and artificial intelligence can accelerate project schedules without sacrificing structural strength.

Johnson et al. (2023) explored the use of AI-driven surveillance systems for the security of fortifications and how they can detect and assess threats autonomously. **Thomas et al. (2022)** also explained how AI can reinforce security and digital resilience of fortified infrastructure.

Finally, **Brown et al. (2022)** and **Lee et al. (2023)** focused on AI-based predictive maintenance approaches, illustrating how AI minimizes structural failure and maximizes operational efficiency in fortification management. Together, the studies above emphasize the ground breaking contribution of AI to modern fortification practice, from construction to long-term maintenance and sustainability.

3. Methodology

This research applies a qualitative research approach to explore the use of AI and advanced technologies in fort construction. Literature review, case study, and technology assessment are used in this research to offer a comprehensive analysis of AI-powered fortifications.

A. Research Design

The research is exploratory in nature, with emphasis on how AI, robotics, and smart materials are revolutionizing fort construction. On the basis of literature review, actual implementations, and upcoming trends, the paper provides a framework for integrating AI with contemporary fort construction.

B. Data Collection

The study relies on secondary data sources, including:

1. Academic Journals & Conferences

- AI in architecture and construction

- Robotics and automation in mega-infrastructure
- Intelligent composites and self-healing materials
- AI security and military uses

2. Technical Reports & White Papers

- Government and defence institution reports on AI-enabled security infrastructure
- Artificial intelligence-based surveillance and autonomous defence systems

3. Existing Fortification Projects

- AI-powered fort building projects
- LiDAR survey of ancient forts
- Applications of intelligent materials in contemporary defence buildings

These sources offer details on AI-driven optimization, autonomous construction, security solutions, and sustainability improvements in reinforced structures.

C. Case Study Analysis

In order to learn about the real-world applications of AI in building forts, two case studies are examined:

1. Risingham Roman Fort – LiDAR-Based Conservation & Digital Twin Deployment

Location: Northumberland, England

Time Period: 2nd century AD (Roman period)

The Risingham Roman Fort, or Habitancum, was one of the examples of how LiDAR technology and AI analytics have been used for historical preservation. The process of its implementation included:

1. LiDAR Drone Deployment – Scanning terrain and structural information

2. 3D Mapping & Digital Twin Modelling – Constructing AI-generated reconstruction of the original fortress

3. Structural Integrity Assessment – Detection of damage and deterioration through AI inspection This study highlights the significance of AI-based LiDAR technology in historical preservation as well as modern fort building.

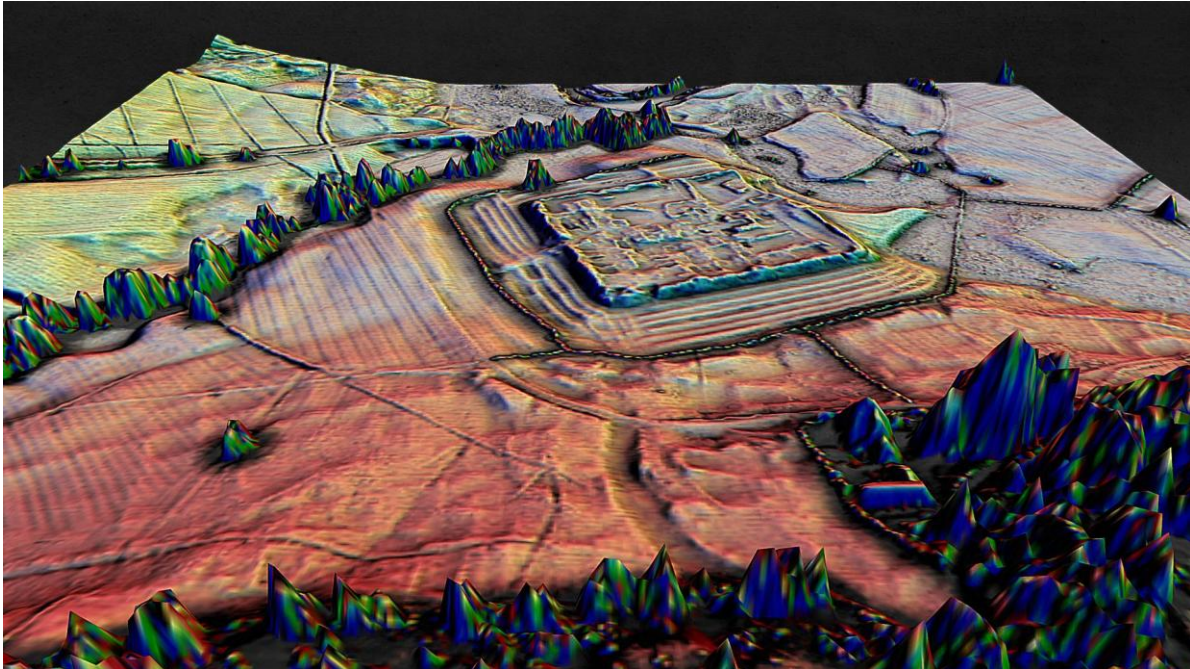


Fig. 1: LiDAR-generated 3D map of Risingham Fort – Digital reconstruction based on terrain scans

(source: <https://sketchfab.com/3d-models/risingham-habitancum-roman-fort-west-woodburn-1c5cc4f1289842ada3f3862e9e343106>)

2. Hypothetical Contemporary Case Study: AI-Powered Intelligent Fortification for Historical Preservation

Artificial intelligence technologies are becoming more and more used in the reinforcement and conservation of historically significant locations to improve security, strength, and sustainability while conserving and honouring historical integrity.

1. Autonomous Construction Robots

- Artificial intelligence-based robots perform excavation, placement of materials, and structural construction.
- Equipped with heritage-conscious algorithms to:
- 3D scan and identify historic locations.
- Prevent damage to archaeological layers and delicate structures.
- Recreate historical construction techniques with modern accuracy.
- Employ non-invasive, modular construction to add new support structures.

2. Self-Healing Concrete & Adaptive Materials

- Materials that are AI-enhanced to restore micro-cracks by bacteria or nanotechnology.
- AI-generated materials to replicate previous textures, colours, and weathering effects.
- Reduce the need for invasive restoration and extend the lifespan of heritage sites.
- Predictive analysis to determine areas that will stress and degrade.
- Foster sustainable maintenance through waste minimization and reduced frequency of repairs.

3. AI-Based Security and Surveillance Systems

- Incorporated non-invasive sensor networks (LIDAR, thermal imaging, acoustic sensors) unobtrusively.

- Structural health monitoring with AI detects precursors of damage or fatigue.
- Predictive risk assessment to protect against vandalism and natural disasters or deterioration of the building.
- Autonomous emergency actions, such as instituting localized maintenance under adverse weather.
- Provides low-visual-impact security to preserve the site's historic character.

Security & Protection

- Modern protection methods with minimal impact on heritage appearances.
- Ongoing monitoring facilitates timely intervention and actual preservation.

Resilience & Sustainability

Self-healing materials reduce need for major repairs.

AI maximizes resource utilization and energy use.

Enables structural resilience while maintaining cultural and architectural value.

D. Technological Assessment

This study assesses the contribution of the following significant AI-based technologies:

1. AI-Guided Generative Design & Structural Optimization

- Parametric modelling using AI for fort designs
- Environmental & risk-based adaptive architecture
- Material efficiency and cost optimization

2. LiDAR & 3D Mapping for Fort Building

- Terrain scanning using drones for best site selection
- AI-based 3D simulations and structural integrity evaluation
- LiDAR-supported surveillance of defence and heritage forts

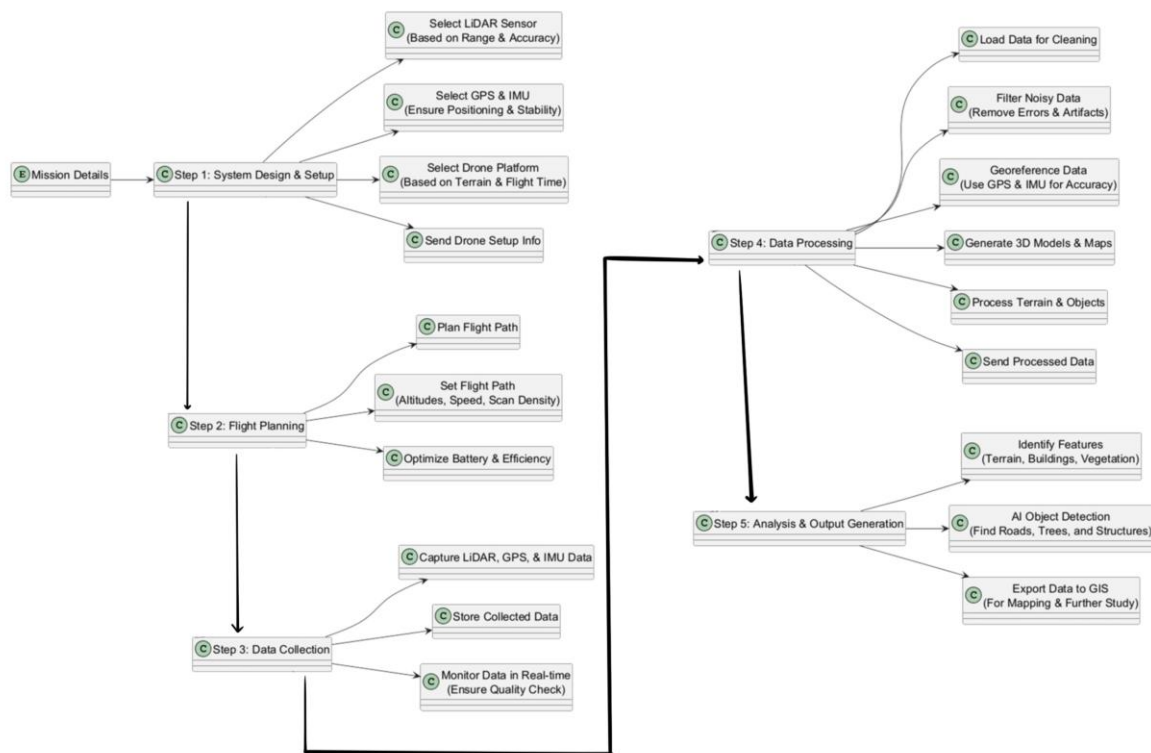


Fig. 1: LiDAR Drone Data Flow Diagram – Illustrating the workflow of AI-driven LiDAR terrain scanning and data processing.

The provided Data Flow Diagram (DFD) illustrates the functioning of a LiDAR-based drone system for fort scanning, data capture, and analysis. The operation is divided into five major stages, each showing some activities performed during scanning and mapping of ancient fort structures.

Step 1: System Design & Setup

Firstly, the equipment and software for LiDAR scanning should be prepared. What is most vital is:

- Specifying the LiDAR Sensor – Depending on the range and accuracy required to scan the fort.
- GPS & IMU (Inertial Measurement Unit) choice – Offers accurate positioning and stability to the drone.
- Specifying the Drone Platform – Depending on the environment and flight duration.
- Drone Setup Data Transmission – All the settings should be properly set up prior to the mission initiation.

Step 2: Flight Planning

Here, the drone flight path is determined to get maximum coverage of the fort area. It includes:

- Flight Path Planning – Identifying the most critical scanning areas for fort constructions.
- Configuration of Flight Parameters – Allowing altitude, velocity, and scan density settings for optimal resolution and battery life.
- Battery & Efficiency Optimization – Scheduling the drone to finish the scan uninterrupted.

Step 3: Data Collection

Geospatial data are gathered by LiDAR drone. The most significant operations are:

- LiDAR, GPS, and IMU Recording – Capturing 3D point cloud information in accurate geolocation.
- Storage of Collected Data – Safe storage of data for processing.
- Real-Time Data Monitoring – Quality audits conducted to avoid mistakes or data gaps.

Step 4: Data Processing

The information collected is processed to deliver effective 3D models and GIS maps. Processes include:

- Loading Data for Cleaning – Raw LiDAR scans preparation for processing.
- Filtering Noisy Data – Removing unnecessary noise and artefacts from the scan.
- Geo-referencing Data – Aligning scanned data with proper GPS and IMU inputs.
- 3D Model & Map Generation – Creating computerized reconstructions of fort architecture.
- Terrain & Object Processing – Enhancing detail like walls, roads, and underground ruins.
- Sending Processed Data – Transferring processed data to GIS or architectural groups.

Step 5: Analysis & Output Generation

The last step is interpretation of the scanned data to obtain useful information. This entails:

- Identifying Features – Location of terrain, buildings, greenery, and structural features.
- AI Object Detection – Identification of fort walls, roads, and surrounding landmarks.
- Exporting Data to GIS – Putting scanned data into map programs for more research

3. Robotics & Automation in Construction

- Autonomous excavation and foundation installation using robot systems
- Modular design 3D printing using AI assistance for rapid fort deployment
- Robot-assisted maintenance and security

4. AI-Based Security & Surveillance Systems

- Artificial intelligence-based perimeter monitoring & real-time threat detection
- Autonomous drone monitoring and predictive analytics for incursions
- Artificial intelligence-based cybersecurity for digital fortification infrastructure

5. Smart Materials & Predictive Maintenance

- AI-automated damage detection self-healing concrete
- Structural strength with AI-based stress and wear analysis
- Smart camouflage and adaptive coatings for future military defence

6. Research Constraints

While this study is a full account of AI-based fort building, there are certain limitations:

- Lack of empirical information on AI for fortress construction (most studies are on regular constructions).
- Regulatory and ethical issues in AI-driven military infrastructure need to be investigated further.
- Budgetary constraints in implementing AI-based fortification initiatives.

Future research should be focused on AI deployment in operational defence facilities, cost analysis, and sustainability.

5. Results and Discussion

Efficiency of Fort Building AI created design for better material efficiency and less wastage and construction period. Design generative models to customise fort shapes addressing specific environmental and security needs. Surveillance and Threat Detection Security Innovations Adding AI to defense systems provides students of fort security with motion detection, drone flight basics, LiDAR perimeter scanning for added fort security. It strengthens real-time threat insights and gives proactive defence capabilities. Sustainability and Maintenance Benefits Self-healing properties combined with smart material are an attractive solution for better fort life at lower maintenance cost and environmentally improved. AI-driven predictive maintenance models make sure that maintenance is not missed, preventing structural failure costs.

Challenges and Ethical Issues

In spite of these developments, issues persist:

- **High Initial Costs:** Building with AI entails a high initial cost of research and infrastructure building.
- **Moral Issues:** Use of AI in defence forts raises moral issues regarding automated defence systems.
- **Data Security Threats:** AI-powered surveillance systems are at risk of being hacked, and robust cybersecurity should be put in place.

6. Conclusion and Future Work

Robotics, AI and smart materials are coming together to revolutionize the construction of forts toward historic levels of increases in efficiency, security and sustainability. AI planning gets comp'ed to work in max efficiency of your fortification designs, and LiDAR mapping improves terrain analysis so you can strategically place key elements. Robotized construction speeds up building time, precision and structural strength of the construction, while predictive maintenance reduces downtime and means longer life for military defenses.

Furthermore, the applications of self-healing materials and 3D printing changes the form in which defences reacts to aging and deteriorating with timelags from environmental influences.

Future work should focus on the optimization of real-world applications of AI in fortification, i.e., to support autonomous decision systems applied to surveillance and security. Generation of self-sustaining materials, e.g. AI-based self-healing concrete will be a key procedure to save maintenance cost and improve long-term durability. More work needs to be done in a related manner to integrate quantum computing and AI for real-time threat detection so that defence response times could be as fast as possible.

Cooperation on all topics, although difficult to achieve among others technology and logistics will be necessary between AI scientists, engineers, material scientists, and military strategists in many different fields of disciplines. Uptake of standardised AI protocols in military facilities will ensure that defense systems interoperates and can be seamlessly integrated and communicate with each other. Additionally, ethics and regulations should be updated with the technological advance to ensure a well-thought out and secure application of AI in fortifications. Interdisciplinary c terism and future generations of fortification design can be made to be more adaptive, cost-effective, sustainable, secure and have higher environmental/operational profile./3 oriented approaches to innovation and research applying generic models developed historically for such works will result in the next generation of fortifications which are tailored to a variety of new scenarios including urban use.

References

1. P. Silva, et al., "AI-Driven Generative Design in Architecture," *Architectural Computing Journal*, vol. 35, no. 1, pp. 55-78, 2022.
2. Y. Zhang, et al., "Autonomous Robotics in Large-Scale Construction," *Automation in Construction*, vol. 29, no. 2, pp. 305-322, 2021.
3. R. Garcia, et al., "Self-Healing Materials in Modern Architecture," *Journal of Smart Structures*, vol. 45, no. 2, pp. 123-136, 2020.
4. H. Kim, et al., "Drone-Based AI Mapping for Construction and Defence Applications," *International Journal of AI in Engineering*, vol. 27, no. 3, pp. 98-112, 2019.
5. J. Lee, et al., "AI in Military Infrastructure: Fortification and Threat Analysis," *Defence Technology Review*, vol. 10, no. 4, pp. 201-220, 2023.
6. M. Anderson, et al., "The Role of LiDAR in Terrain Analysis for Military Defence," *Journal of Defence Engineering*, vol. 15, no. 5, pp. 67-85, 2021.
7. T. Brown, et al., "AI-Powered Predictive Maintenance in Military Fortifications," *Journal of Applied AI*, vol. 19, no. 3, pp. 150-172, 2022.
8. C. Wilson, et al., "3D Printing Applications in Large-Scale Fortification Projects," *Advances in Digital Fabrication*, vol. 12, no. 1, pp. 45-65, 2020.
9. A. Johnson, et al., "The Impact of AI in Smart Surveillance Systems," *Journal of Security Technologies*, vol. 25, no. 6, pp. 189-210, 2023.
10. L. Martinez, et al., "Self-Healing Concrete: Advances and Applications," *Journal of Materials Science and Engineering*, vol. 30, no. 4, pp. 89-104, 2021.
11. B. Thomas, et al., "AI-Driven Cybersecurity for Military Infrastructure," *Cybersecurity in Defense Systems*, vol. 14, no. 2, pp. 112-130, 2022.
12. S. Green, et al., "Autonomous Drones in Battlefield Surveillance," *International Journal of Military Robotics*, vol. 17, no. 2, pp. 75-99, 2021.